

# Fiber Amplifier 光纖放大器

**BR3-NP**

**Digital display**  
Green: Set Value  
Red: Present Value

**Output indicator**

**L.on/ D.on switch**

**Function switch**

**Adj/ 3-way  
Rocker Button**

33 mm

72 mm

10 mm

**Din rail mounting**

- Dual output (NPN/ PNP sync. out)
- Auto teaching press button 2sec
- Easily detect tiny object



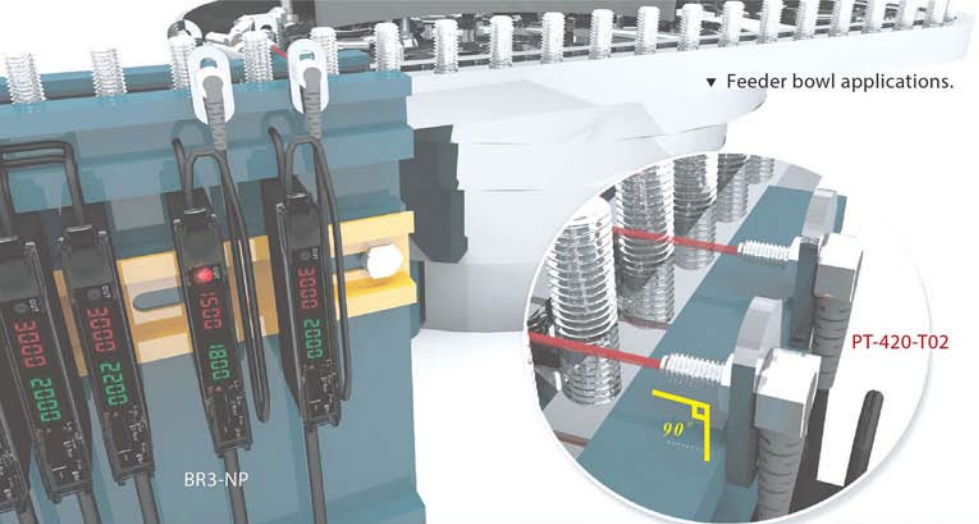
FZ1-KP2



BR1-N



BR2-NP



▼ Feeder bowl applications.

## 90 Degree Fiber 90° 光纖

### ● Features

- High stability
- Saving space, easier to install
- 90 degree wiring design kept installation neatly attached to mechanism

	Reflective	Thrubeam
M6	PR-620-T02	—
M4	PRD-420-T02	PT-420-T02
M3	PRD-320-T01	PT-320-T01

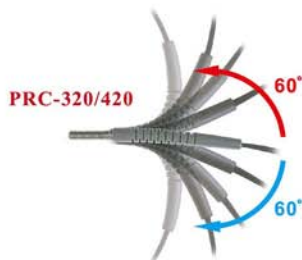
## PT/PR TYPE PT/PR 型式

### ● Features

- Protection against excessive bending
- High tensile strength
- High quality

Patent NO.  
M368808 / M380485

### ● Special material for bending resistance



- Special material for bending resistance : better curvature and protection from breakage of fiber in case of smaller bending radius in operation.

- Swinging tests: Swings of **PRC-320/420** are up to 30000. It will efficiently protect the fiber and extend its service life.



Lens Build-in Models: 9°

(Emitter)

(Receiver)

### Features

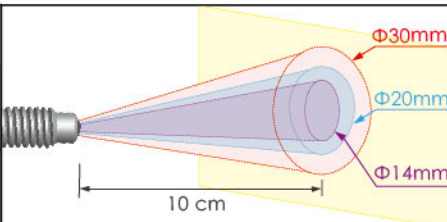
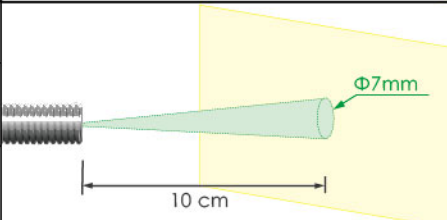
- Increasing sensitivity, minimum sensing object 0.5mm
- Small light spot, to keep emitter light on main sensing object
- New lens built in, increasing sensing distance
- Narrow the emitter light angle for more focusing and more precisely
- New design with lens built in, narrow the emitter light angle for more focusing



Ball lens

## Fiber Built with Lens 光纖內含鏡頭

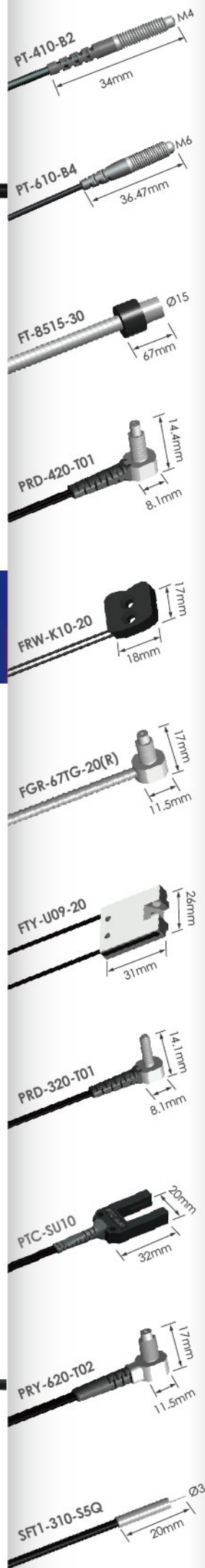
### M4 / M6 TYPE

PTA-410-B2		PTS2-410-B2		PTS2-610-B4		
Spot size	Angle	Spot size	Angle	Spot size	Angle	
Φ14mm	9°	Φ30mm	18°	Φ20mm	12°	
PT-420-H12 (Emitter)						
Spot size			Angle			
Φ7mm			9°			

### Application: PT-420-H12

Models without lens: 60°

Lens Build-in Models: 9°



PT-60ML

15 mm  
40 mm  
80 mm

PT4A-20

BR3-NP

▲ Detecting thin film.

## Array Fiber 矩陣光纖

PR-20ML

• Detecting ladframe

FT-30ML-20

BR3-NP

• Detecting edge of target.

## • Metal Casing 金屬外殼矩陣光纖

PT-25ML

• Detecting pillar or tablet.

PT-100ML

• Detecting and counting on conveyor.



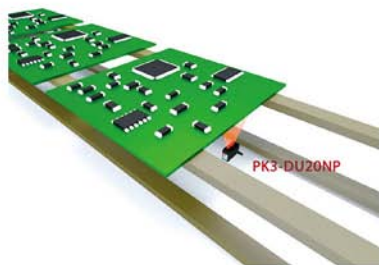
# RiKO



## Wide-Angle Diffuse type Photo Sensor 廣角漫返型光電開關

### Features

- Standard screw hole 25.4mm
- Compact size (W12xH31xD20mm)
- Visible dual LED makes you easy to know the current operating situation



- Detecting PCB passing.



- Detecting Frame passing.

## Long Sensing Range Photo Sensor 長距離檢測方形光電開關



### Features

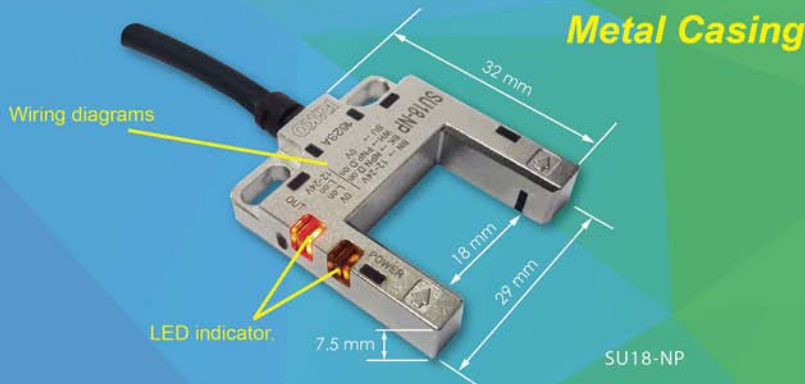
- Aspherical optical lens.
- Relay output.
- Off-delay 0.2 second.
- Visible RED light for positioning.
- Special protective hood for dust-proof and greasiness-proof.



### Features

- Special protective hood against waterdrop and dust.
- Its special design enhances more durable and rigid.
- Through beam sensing distance 50M.
- Timer function : On-delay / Off-delay.





## Metal Casing U-shaped Photo Sensor 金屬外殼U型光電開關

### Features

- Robust metal casing
- High-speed response, On: 1ms / Off: 1ms
- Wide vane, 18 mm
- SU18 has a better prevention of outside light 5,000 lux max



- Machine positioning.

- Detecting positions of rails.

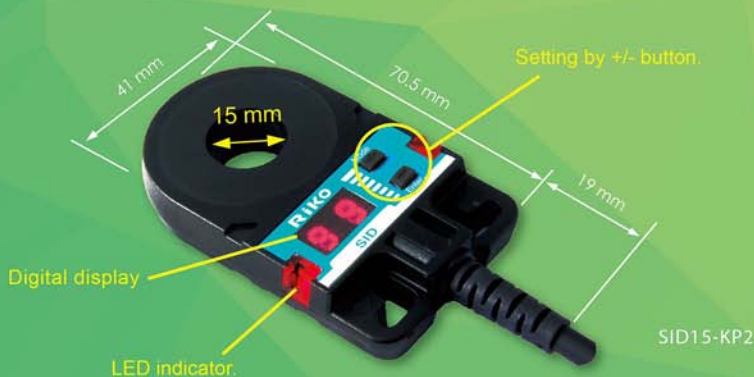
## Overmolding Tubular Photo Sensor 一體成型包覆式光電開關

PMF-DU10NP1



### Features

- 60 degree pre-wiring applied to vertical or horizontal positions.
- High brightness red LED indication makes you easy to know the operating situation.
- Special line-out design for tensile. It will upgrade the durability and life.

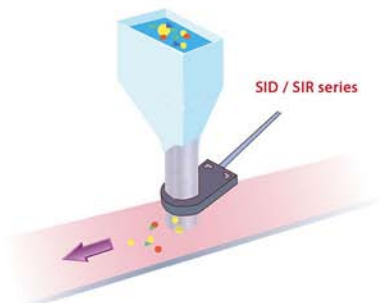


# Digital Inductive Ring Sensor

## 數顯示環形近接開關

### Features

- Suitable for the detection of tiny metal passing
- The plug in connector type for easy steps of installation
- Digital sensitivity adjustment



- In ring sensors, sensing is made within the ring itself. The sensors are activated when a metallic object is introduced within it.



Plug-in connector



Pre-wired



- Detecting metal parts.

SID15-KP2

SID22-KP2K1

SID30-KP2

SIR15-KP2

SIR22-KP2K1

SIR30-KP2K1



## Metal Casing



## Metal Casing Micro Inductive Sensor

### 金屬外殼微型近接開關

#### Pre-wire Ø3 x 2M/3-wires

##### ● Features

- Robust metal casing
- Small dimension : 8.5x5.5x25mm



- Detecting worktable positions.

#### M8 pigtailed type

##### ● Features

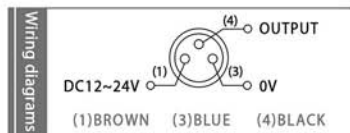
- M8 3pin connector model available
- Single screw hole fixing



JM02-ND



JMD02-ND



## Teflon Housing Capacitive Sensor

### 鐵氟龍外殼電容式近接開關（耐酸鹼、抗腐蝕）

##### ● Features

- Teflon(PTFE) Housing : Acid - resistant
- Sensitivity adjustment : 20-turns potentiometer (VR).
- Widely applied to detect metal, water, oil, glass, plastics, paper etc.



KCT-1810KP2